

Configuração Genérica – equipamentos não Optimus CLIX por bridge

Na página de configuração do seu equipamento poderá seleccionar uma configuração através do tipo de ligação por “Bridge” e configurar segundo os procedimentos seguintes:

- 1 No menu “Start” seleccione “Control Panel”.



- 2 No canto superior esquerdo da janela seleccione a opção “Switch to Classic View”.



- 3 Escolha o ícone “Network Connections”.



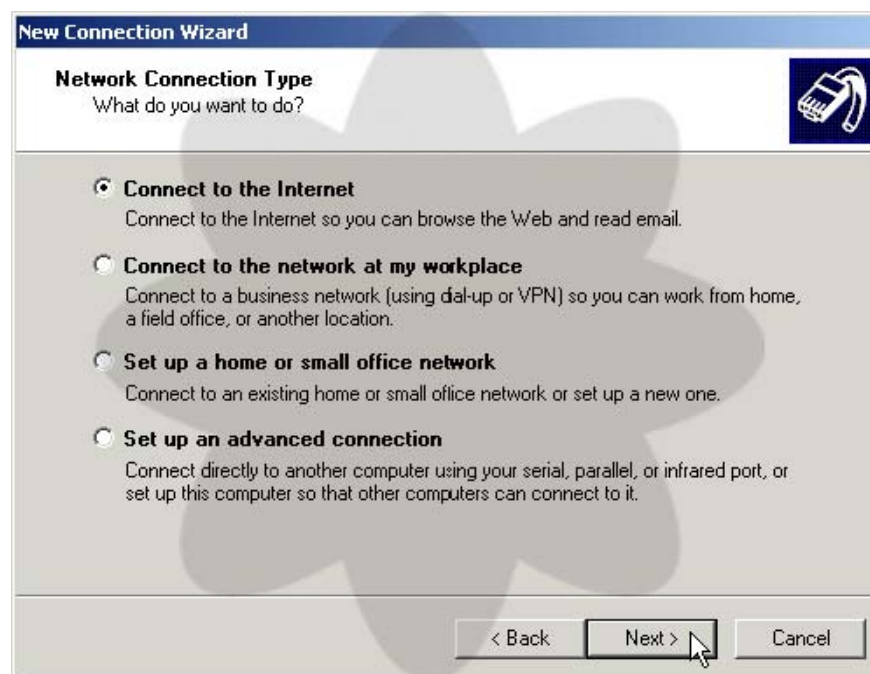
- 4 Faça “duplo-clique” sobre “Create a New Connection”.



5 Na janela que é apresentada seleccione "Next" para iniciar a configuração.



6 De seguida seleccione a opção "Connect to Internet".



7 Seleccione a opção "Set up my connection manually".



8 Nesta janela, seleccione a opção "Connect using a broadband connection that requires user name and password".



9 Nesta janela, preencha os seguintes campos:

"User name" com o seu Número de Utilizador, ex: "x1234567@clixadsl"

"Password" com a sua Senha de Acesso

"Confirm password" novamente a sua Senha de Acesso.

Nota: distinga claramente as letras maiúsculas das minúsculas.



The screenshot shows the 'New Connection Wizard' dialog box, specifically the 'Internet Account Information' step. The title bar reads 'New Connection Wizard'. Below the title bar, there is a section titled 'Internet Account Information' with a sub-header 'You will need an account name and password to sign in to your Internet account.' and an icon of a hand holding a mouse. The main area contains instructions: 'Type an ISP account name and password, then write down this information and store it in a safe place. (If you have forgotten an existing account name or password, contact your ISP.)'. There are three input fields: 'User name:' containing 'x1234567@clixadd', 'Password:' with six dots, and 'Confirm password:' with six dots. Below the fields are three checked checkboxes: 'Use this account name and password when anyone connects to the Internet from this computer', 'Make this the default Internet connection', and 'Turn on Internet Connection Firewall for this connection'. At the bottom, there are three buttons: '< Back', 'Next >', and 'Cancel'. A mouse cursor is pointing at the 'Next >' button.

10 Por fim, basta seleccionar o botão "Finish" e está terminada a configuração.



The screenshot shows the 'New Connection Wizard' dialog box, specifically the 'Completing the New Connection Wizard' step. The title bar reads 'New Connection Wizard'. The main area features a large blue globe icon on the left and a section titled 'Completing the New Connection Wizard'. Below the title, it says 'You have successfully completed the steps needed to create the following connection:'. The connection name is 'Optimus Clix'. A bulleted list of settings is shown: 'Make this the default connection', 'This connection is firewalled', 'Share with all users of this computer', and 'Use the same user name & password for everyone'. Below this, it states 'The connection will be saved in the Network Connections folder.' and there is a checked checkbox for 'Add a shortcut to this connection to my desktop'. At the bottom, it says 'To create the connection and close this wizard, click Finish.' and there are three buttons: '< Back', 'Finish', and 'Cancel'. A mouse cursor is pointing at the 'Finish' button.